

epic



epic

**Bellisimmo**

Bungalow elevators for an extraordinary lifestyle!



**RISE ABOVE FOR THE BEST WITH**

**epic**

THE LATEST ITALIAN TECHNOLOGY

# **BELT DRIVE MRL MACHINE**

Now In India

## **Flexibility**

- Suitable for civil and structural shafts.
- Can be easily installed in existing building architecture with minimum disruption.
- Suits applications ranging from Villas, Duplex Penthouses and G+4 constructions.
- Wide range of sizes to suit every need.

## **Ride & Comfort**

- Ultra smooth starting and stopping.
- Silent operation.

## **Care for Seniors & Differently Abled**

- Inverter ready - can work when power supply fails\*
- Automatic Rescue Device (ARD)
- ARD malfunction alert
- Wide doors for easy wheelchair access
- Buttons easy to reach from a wheelchair
- Handrails in the cabin

## **High on Customization**

- Wide choice of colours
- Special finishes in stainless steel
- Glass cabins and Doors
- Varieties of operation panels

## **Safety & Reliability**

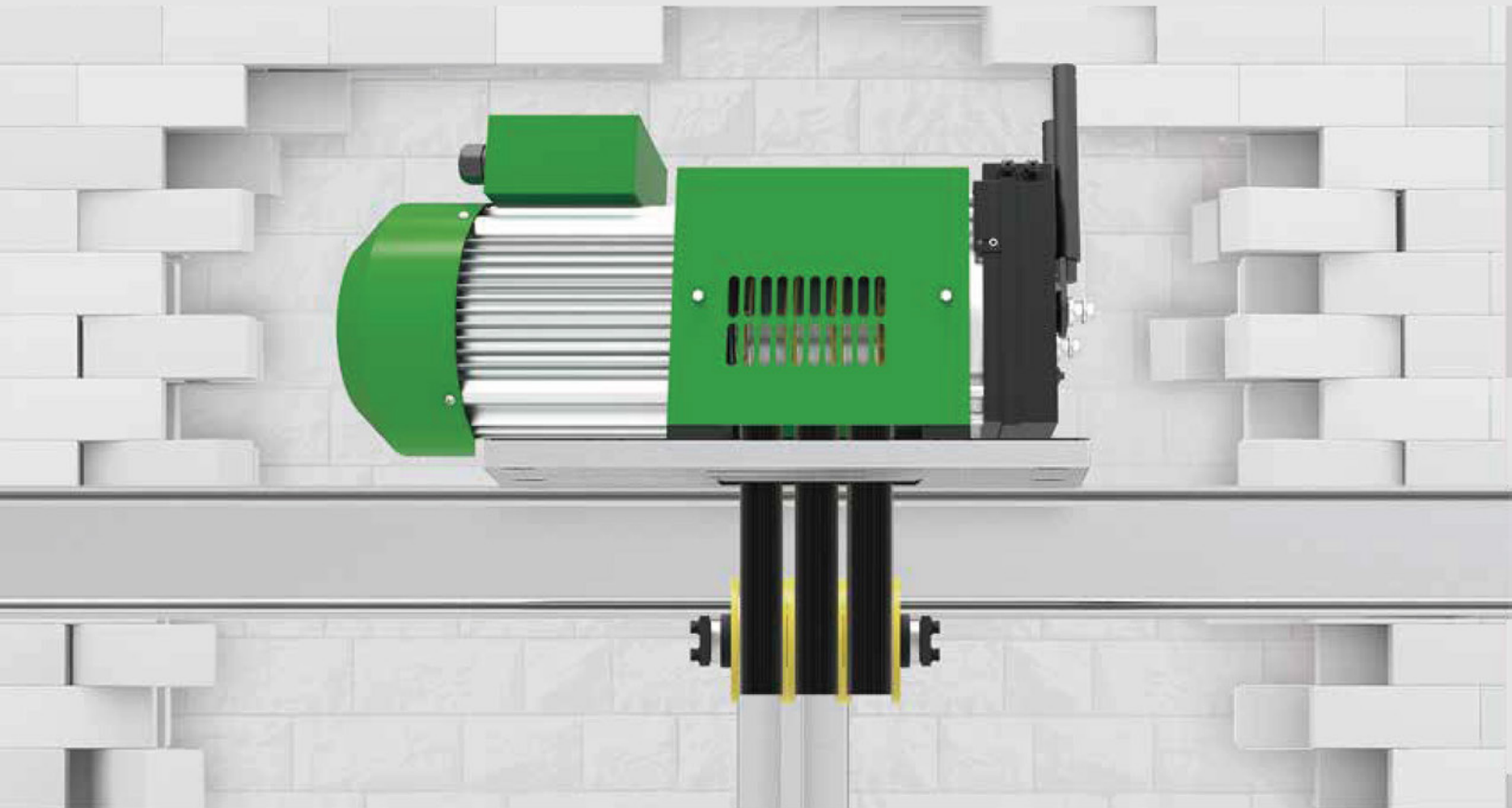
- Emergency rescue –Electrical & Mechanical
- Full height light Curtain
- Emergency light in cabin
- Alarm
- Intercom

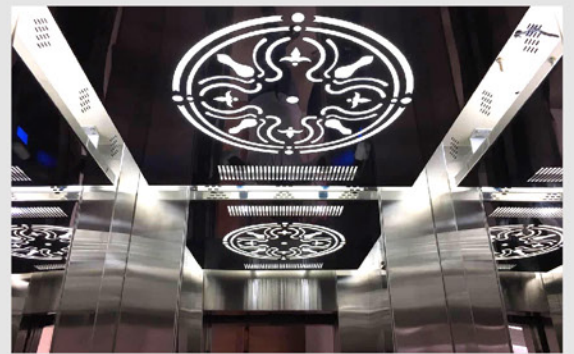
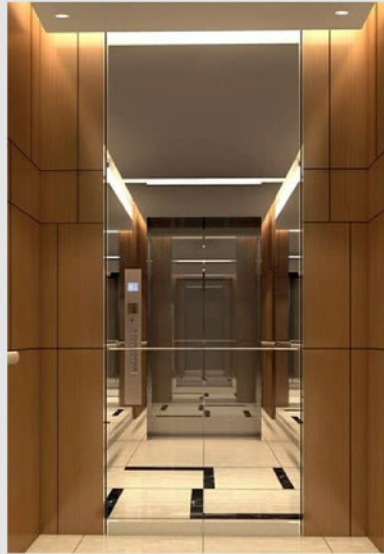
## **Italian Technology**

- Precision Engineering, Proven Reliability and Solid Dependability

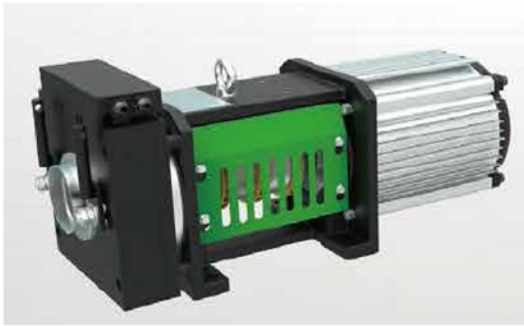
\*6kVA – External – Customer Scope

# All types of Machines and Accessories at one roof





## Gearless Traction Machine



### SPECIFICATION

Load:	400 kgs
Suspension:	2:1
Center height:	112 mm
Product weight:	87 kgs
Max.static Load:	2000 kgs
Rated power:	1.7 kw
rated frequency:	14.8/23.3/37 hz
Rated speed:	178/280/444 r/min
Sheave Diam:	86 mm
traction Belt:	2 pieces
INS class:	F
IP code:	IP42
Cooling type:	natural
Lift speed:	0.63 m/s
Brake:	DC 110V 2*0.60A
Voltage:	220 V
Encoder:	Heidenhain ERN1387
Bearing:	SKF
certificate:	EN81,CE
machine size:	552x216x306mm
individual box:	77*30*48cm
box g.weight:	100 Kgs
pallet size:	77*30cm (0.231 m2)
pallet weight:	10kgs

## Belt Lock



### SPECIFICATION

Product weight:	2700 grams
product size:	339*53*42mm
color:	blue spring,zinc plating
packaging:	polybag
packing:	
certificate:	TUVRheinland witness test report

## Belt Holder/Clip



### SPECIFICATION

Product weight:	126 grams
product size:	45*25*20mm
color:	black
packaging:	polybag

## Brake Release



### SPECIFICATION

<b>Product weight:</b>	4400 grams
<b>product size:</b>	177*172*50mm
<b>color:</b>	blue/red
<b>packaging:</b>	polybag

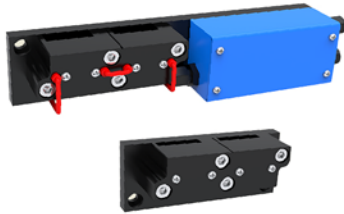
## Counter Pulley



### SPECIFICATION

<b>axle diameter:</b>	35mm
<b>outline sizes:</b>	diam: 99mm, length: 123mm
need to match with customer's assembly way and size to finalize the sizes.	
<b>packaging:</b>	polybag + box
<b>packing:</b>	to be advise
Please note: For L-type Safety - 2 nos. pulley required For Bottom type - 3 nos. pulley required	

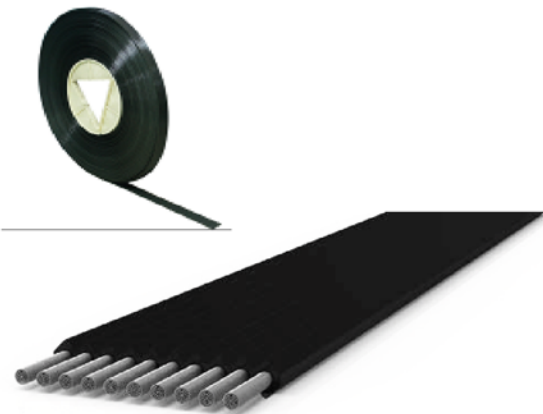
## Belt Checking Detector



### SPECIFICATION

<b>Sizes:</b>	50*118mm & 50*225mm
<b>Packaging:</b>	polybag+box
<b>Packing:</b>	to be advise
<b>Certificate:</b>	CE

## Traction Belt



### SPECIFICATION

<b>size:</b>	width: 30 mm
<b>wire thickness:</b>	2.15 mm
<b>wire numbers:</b>	10 pcs
<b>min breaking force:</b>	43000N/ each belt & glued wire inside
<b>Product weight:</b>	0.26kg/meter
<b>packaging:</b>	polybag
<b>packing:</b>	
<b>certificate:</b>	TUVRheinland witness test report

<b>Specification</b>	<b>Details</b>	<b>IS 15259 Compliance</b>
Capacity	4p	√
Load, Kg	272	√
Spped, mps	0.30 up to 0.63	√
Stops	5	√
Travels, mtr	15	√
Low pit, 150mm	Mechanical Stopper	√

## Specifications:

Type:	Machine Roomless, Electric Traction drive
Power supply :	Single Phase 230V, 50Hz, 272kg-0.8Kw, 340kg-0.9Kw 408kg-1.1Kw
Machine :	PMSM Gearless
Hoistway :	Civil/Structural-customer scope
Controller :	Integrated VVF Drive
Cabin finishes :	Mild Steel Powder coated / Stainless steel /Glass
Cabin height (below suspended ceiling):	2050mm
Doors :	Center opening (C2) & Telescopic (T2)
Door Finishes :	Mild steel Powder coated / Stainless steel/ Framed Glass Doors
LOP/COP :	SS Face plate with Button-surface mount / Touch Box type
Display (LOP/COP) :	SS Face plate with Buttons – Dot Matrix & TFT Touch –TFT
False ceiling :	Stainless steel with LED spot lights
Flooring :	PVC mat / Recess (20mm / 25mm)
Handrail :	Optional
Infrared sensor :	Full Height
Overload Indicator :	Provided
Intercom :	2 way
Automatic Rescue Device :	Provided
Emergency Light :	Provided
Wheel Chair access :	Optional
Floor Annunciator :	Optional
Levelling Accuracy :	+/-5mm

## Technical Data - Controller

- Compact and slim service panel
- Automatic evacuation function with indication on COP
- Down collective, full collective (Optional)
- The Plug-and-play controller with CAN-bus-technology for quick installation
- Pre-wired travelling cable
- Landing operation panels and car operation panels pre-wired travelling cable
- Landing operation panel and car operation panels pre-wired and plug-in-type
- Automatic car light off
- Hand held terminal for easy programming and diagnosis
- Automated testing (Daily/Weekly) of ARD

## Drive Technology

- Field-oriented frequency Drive integrated into controller cabinet for a smooth drive
- Programming via graphical keypad directly connected to the controller
- Supports Single/ Dual entrances (Through Car)
- Dual entrances can be operated independently

## Epic Bellisimmo Advantages



**FULL COMPLIANCE TO INDIAN STANDARDS**

Not required license



**OPERATES ON SINGLE PHASE POWER SUPPLY**

Suits both single / three phase  
Works on Inverter\*  
Very low cabling costs  
Lesser electrical hardware costs



**COMPACT DESIGN**

No pit & No overhead  
Leaser Lift shaft requirement



**QUICK INSTALLATION**

Optimized Packing, User Friendly Manuals  
Plug and Play Controllers



**DURABLE AND RELIABLE**

German Technology, FEA Calculations  
ARD Self diagnosis



**A SILENT AND COMFORTABLE RIDE**

Gearless Belt Machine  
Integrated VVVF Drive

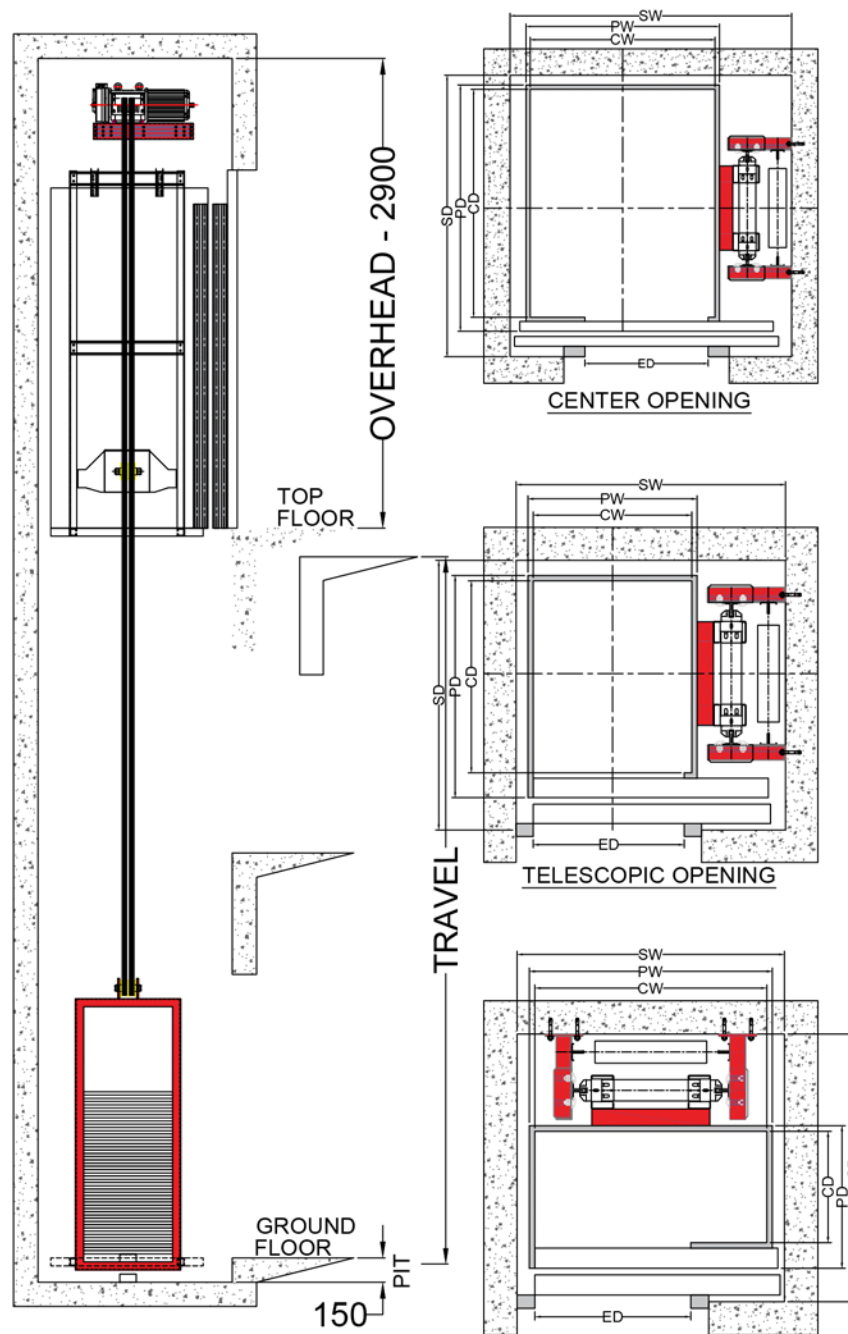


**REDUCED ENERGY CONSUMPTION**

LED Lights, Zero watt standby mode doors

\*6kVA - External - Customer Scope





## Shaft Sizes & Car Sizes

CAPACITY	SPEED	DOOR		PLATFORM SIZE		CAR SIZE		LIFTWELL SIZE		OVERHEAD	PIT
		DOOR TYPE	EW X 2000MM HT.	PW	PD	CW	CD	SW	SD		
272, 340 & 408	0.30 TO 0.63	T2	700	1100	640	1050	500	1200	1200	MIN. 2900	MIN. 150
		T2	700	785	1030	735	890	1250	1250		
		T2	700	835	1080	785	940	1300	1300		
		T2	700	885	1130	835	990	1350	1350		
		T2	800	935	1180	885	1040	1400	1400		
		T2	800	985	1230	935	1090	1450	1450		
		T2	800	1035	1280	985	1140	1500	1500		
		C2	700	1055	1350	1005	1245	1550	1550		
		C2	700	1105	1400	1055	1295	1600	1600		
		C2	700	1155	1450	1105	1345	1650	1650		
		C2	800	1205	1500	1155	1395	1700	1700		
		C2	800	1255	1550	1205	1445	1750	1750		
		C2	700	1305	1600	1255	1495	1800	1800		

T2 = TELESCOPIC OPENING 2 PANEL  
 C2 = CENTER OPENING 2 PANEL  
 EW = ENTRANCE WIDTH

PW = PLATFORM WIDTH  
 PD = PLATFORM DEPTH  
 CW = CAR IN SIDE WIDTH

CD = CAR IN SIDE DEPTH  
 SW = SHAFT WIDTH  
 SD = SHAFT DEPTH

# Rise Above And Beyond Boundaries



## OVERSEAS BRANCHES:

- Oman
- Kenya
- Qatar
- Nepal
- Yemen
- Kuwait

## DOMESTIC BRANCHES:

- Gujarat
- Maharashtra
- Chattisgarh
- Assam
- Odisha
- Bihar
- Kerala
- Andhra Pradesh



## FOR INQUIRY:

A-1311, Mondeal Heights, Nr. Novotel Hotel, Iscon Cross Road,  
Sarkhej - Gandhinagar Highway, Ahmedabad, Gujarat - 380 015

[www.epicelevators.com](http://www.epicelevators.com)

+91 98792 50125

info@epicelevators.com

+91 98792 50125

epic.elevators